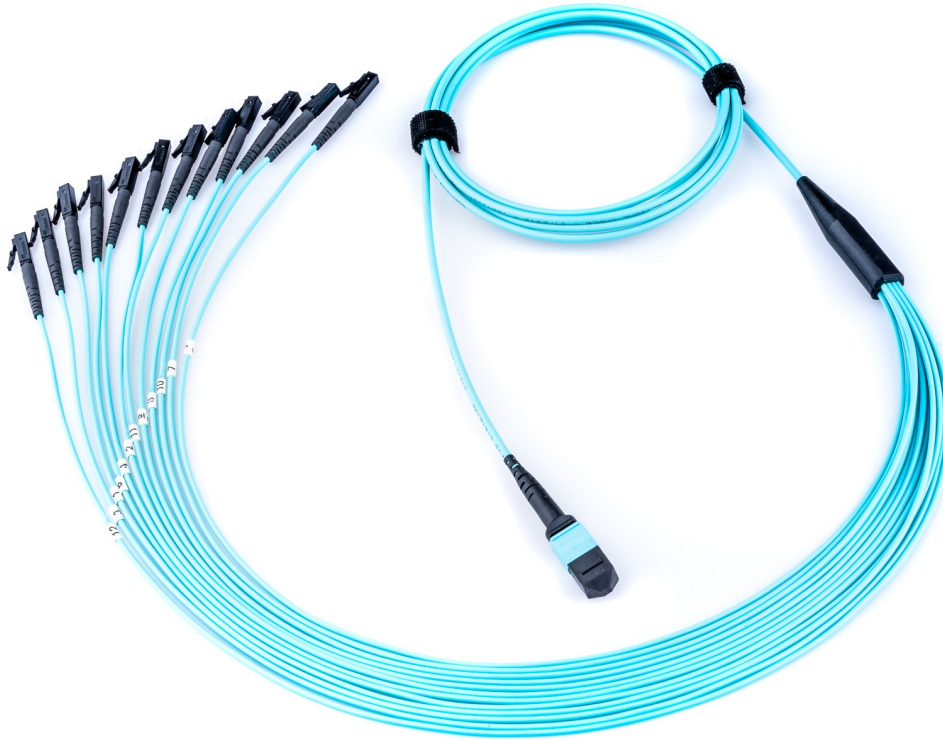


TRUNK CABLE ASSEMBLIES



Pre-terminated cable assemblies made your way.

Fiber Connections can manufacture cable assemblies using almost any type of cable or connector available on the market today. All of our assemblies are manufactured here in North America using the highest quality components. All assemblies are 100% tested in our lab using state of the art equipment. If you don't find what you're looking for as part of our standard product offering, please contact customer service to discuss your needs.

KEY FEATURES

- 100% tested in our state of the art production facility
- 100% EFG testing is available upon request
- Wide variety of connector and cable options available
- Custom configurations are available upon request
- Factory terminated/tested assemblies reduce installation variability installation time
- Quick turn around of standard and custom assemblies
- Detailed drawings available upon request
- Manufactured in North America

Over the 25 plus years that we've been in business, our R & D staff has developed proprietary termination and polishing techniques that have allowed us to exceed many of the industry standards for these products.

We carry a huge inventory of cable and connector types from many different manufacturers. Part numbers can be configured to use 100% Corning brand components if requested. Our non-Corning cable assemblies use other well respected cable and connector manufacturers such as AFOP, Senko, OCC, TLC and more.



Using our universal part number scheme on the following page, standard part numbers can be created for almost any configuration of cable assembly quickly and easily. Detailed engineering drawings for any assembly are available upon request. We also offer quick and efficient customization on any standard cable assembly configuration. Contact customer service today with any questions. Just tell us what you're looking for and we'll be happy to assist in assigning the right part number to suit your application.

ORDERING INFORMATION

1	2	3	4	5	6	7	8	9	10	11	12	13	14	15	16	17
1 Assembly Type					5 Cable Type Cable Type					7 Fanout Length End 1					11 Fanout Length End 2	
C Cable Assembly (Corning)					L LSZH					A 25cm					A 25cm	
D Cable Assembly (Non-Corning)					N Not Rated (OSP)					B 50cm					B 50cm	
2 Fiber Type					P Plenum					C 100cm					C 100cm	
1 OM1					R Riser					D 150cm					D 150cm	
2 OS2					S Plenum Armored (In/Outdoor)					E 200cm					E 200cm	
3 OM2					6 Connector End 1 Connector End 1					F 300cm					F 300cm	
9 OM3					00 PIGTAIL					N NA					N NA	
A OM4					FA FC/APC					8 Fanout Type End 1					12 Fanout Type End 2	
3 Fiber Count					FC FC					2 2mm					2 2mm	
1 1					LA LC/APC SX					3 3mm					3 3mm	
2 2					LC LC SX					9 900um					9 900um	
4 4					LD LC DX					A 2.5mm					A 2.5mm	
6 6F					LM LC-MINI DX					N NA					N NA	
8 8F					LN LC ODVA					9 Fanout Geometry End 1					13 Fanout Geometry End 2	
A 12F					LU LC UNIBOOT					0 No Stagger					0 No Stagger	
B 16F					LZ LC/APC DX					1 Stagger 1					1 Stagger 1	
C 18F					RJ MTRJ(F)					2 Stagger 2					2 Stagger 2	
D 24F					RM MTRJ(M)					3 Stagger 3					3 Stagger 3	
E 32F					SA SC/APC SX					4 Stagger 4					4 Stagger 4	
F 36F					SC SC SX					N NA					N NA	
H 48F					SD SC DX					10 Connector End 2					14 Connector Performance	
J 60F					ST ST					00 Pigtail					E EFG Grade	
K 72F					SZ SC/APC DX					FA FC/APC					F EFG Grade w/test data	
L 96F										FC FC					L Low Loss	
M 144F										LA LC/APC SX					S Standard	
P 216F										LC LC SX					15 Assembly Polarity	
V 288F										LD LC DX					F Standard	
4 Cable Rating										LM LC-MINI DX					G Reversed	
A Riser (In/Outdoor)										LN LC ODVA					16 Length (Meters)	
B Plenum (In/Outdoor)										LU LC Uniboot						
C LSZH (In/Outdoor)										LZ LC/APC D+X						
D Riser Armored										RJ MTRJ(F)						
E Plenum Armored										RM MTRJ(M)						
F LSZH Armored										SA SC/APC SX						
G No Jacket										SC SC SX						
H Riser Armored (In/Outdoor)										SD SC DX						
J LSZH Armored (In/Outdoor)										ST ST						
K Not Rated (OSP) Armored										SZ SC/APC DX						
															17 Pull Kits	
															0 No PK	
															1 PK End B	
															2 PK Both Ends	

TECHNICAL SPECIFICATIONS

Single Fiber & MTRJ Connector Performance

Multimode	6.25/125 μm and 50/125μm @ 850nm				
	Insertion Loss (dB)		Durability	Ferrule Material	Housing Material
Connector	Typical	Max	<0.2dB		
FCpc	0.2	0.4	<0.2dB	Ceramic	Metal Alloy
LC	0.2	0.4	<0.2dB	Ceramic	Composite
LC Duplex	0.2	0.4	<0.2dB	Ceramic	Composite
MTRJ	0.3	0.4	<0.2dB	Ceramic	Composite
SCpc	0.2	0.4	<0.2dB	Ceramic	Composite
STpc polybody	0.2	0.4	<0.2dB	Ceramic	Composite
STpc metal	0.2	0.4	<0.2dB	Ceramic	Metal Alloy

Singlemode	@1310nm						
	Insertion Loss (dB)		Reflectance (dB)		Durability	Ferrule Material	Housing Material
Connector	Typical	Max	Typical	Max			
FCupc	0.2	0.4	≤ -59	≤ -55	<0.2dB	Ceramic	Metal Alloy
FCapc	0.2	0.4	≤ -68	≤ -65	<0.2dB	Ceramic	Metal Alloy
LC	0.2	0.4	≤ -58	≤ -55	<0.2dB	Ceramic	Composite
LC Duplex	0.2	0.4	≤ -58	≤ -55	<0.2dB	Ceramic	Composite
MTRJ	0.3	0.4	≤ -53	≤ -40	<0.2dB	Composite	Composite
SCupc Duplex	0.2	0.4	≤ -59	≤ -55	<0.2dB	Ceramic	Composite
SCupc	0.2	0.4	≤ -58	≤ -55	<0.2dB	Ceramic	Composite
SCapc	0.2	0.4	≤ -68	≤ -65	<0.2dB	Ceramic	Composite
STupc polybody	0.2	0.4	≤ -58	≤ -55	<0.2dB	Ceramic	Composite
STupc metal	0.2	0.4	≤ -58	≤ -55	<0.2dB	Ceramic	Metal Alloy

Durability— insertion loss change for 500 reconnections

Fiber Transmission Performance

	Multimode				Singlemode
Fiber Type	62.5/125 μ m (850/1300nm)	50/125 μ m (850/1300nm)	50/125 μ m (850/1300nm)	50/125 μ m (850/1300nm)	Singlemode (1310/1383/1550nm)
Fiber Type ISO/IEC name	OM1	OM2	OM3	OM4	OS2
Maximum Attenuation (dB/km)	3.4/1.0	3.0/1.0	3.0/1.0	3.0/1.0	0.4/0.4/0.3*
Maximum Attenuation (dB/km)	3.4/1.0	3.0/1.0	3.0/1.0	3.0/1.0	0.65/0.65/0.5**
Minimum Over Filled Launch (OFL) Bandwidth (MHx•km)	200/500	700/500	1500/500	1500/500	- / - / -
Minimum Effective Modal Bandwidth (MHx•km)	220 / -	950 / -	2000 / -	5350+ / -	- / - / -
Serial 1 Gigabit Ethernet Distance (m)	300/550	750/600	1000/600	1000/600	5000/ - / -
Serial 10 Gigabit Ethernet Distance (m)	33/ -	150/ -	300/ -	600/ -	10000/ - / 40000