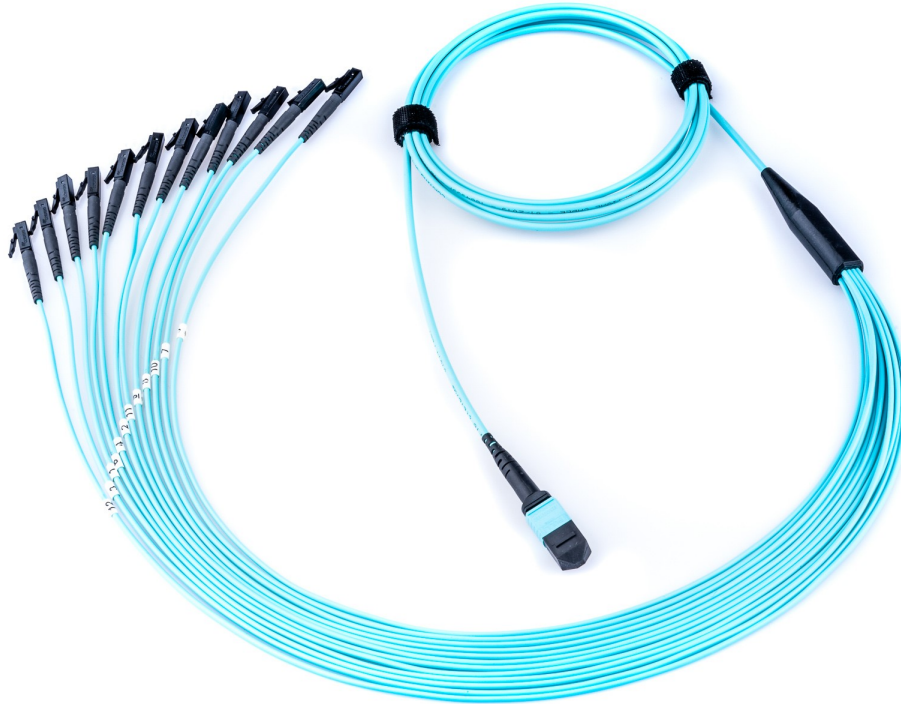




MTP/MPO FANOUT ASSEMBLIES



High quality & made to order

Fiber Connections' fanout assemblies are custom made to each customer's individual requirements. Fanouts are available in a wide variety of cable, fiber and connector configurations. These assemblies are made to order and 100% tested. Each assembly is individually packaged and serialized with test results included. These high quality assemblies are made to order to your exact requirements.

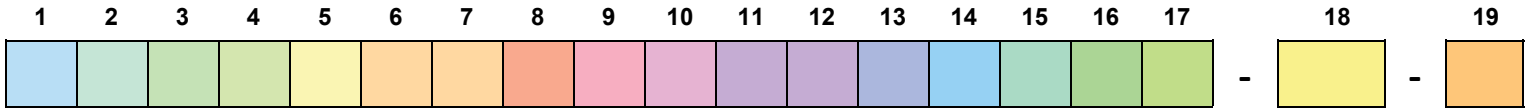
KEY FEATURES

- factory terminated/tested solution eliminates installation variability
- custom configurations available upon request
- 100% end face geometry testing is available upon request
- many fanout jacket sizes to choose from such as 900µm, 2mm, 3mm
- industry leading super low MTP insertion loss values
- manufactured in North America for quick turn around

TYPICAL INTERCONNECTIONS

- data center applications
- high density cross connects
- backbone installations
- disaster recovery projects
- horizontal zone cabling
- 40G, 100G, QSFP Applications

ORDERING INFORMATION



1	Assembly Type
C	Cable Assembly (Corning)
D	Cable Assembly (Non-Corning)
2	Fiber Type
1	OM1
2	OS2
3	OM2
9	OM3
A	OM4
3	Fiber Count
6	6F
8	8F
A	12F
B	16F
C	18F
D	24F
E	32F
F	36F
H	48F
J	60F
K	72F
L	96F
M	144F
P	216F
V	288F
4	Cable Rating
A	Riser (In/Outdoor)
B	Plenum (In/Outdoor)
C	LSZH (In/Outdoor)
D	Riser Armored
E	Plenum Armored
F	LSZH Armored
G	No Jacket
H	Riser Armored (In/Outdoor)
J	LSZH Armored (In/Outdoor)
K	Not Rated (OSP) Armored
L	LSZH
N	Not Rated (OSP)
P	Plenum
R	Riser
S	Plenum Armored (In/Outdoor)

5	Cable Type
H	2mm Mini-Dist (Max 12F)
J	Dual jacket Mini-Dist w/3mm subs
P	SST
Q	Ribbon
S	Loose-tube Figure 8
U	Dual Jacket Mini-Dist w/2mm subs
V	3mm Mini-Dist Interconnect Max 24F
W	Loose-tube
6,7	Connector End 1
00	PIGTAIL
F8	MTP(F) Base 8 Pro
FB	MTP(F) 24F
FD	MTP(F) Base 8
FJ	MTP(F) 24F IND
FM	MTP(F) 12F
FN	MTP(F) 12F IND
FP	MTP(F) 12F Pro
M8	MTP(M) Base 8 Pro
MB	MTP(M) 24F
MD	MTP(M) Base 8
MJ	MTP(M) 24F IND
MM	MTP(M) 12F
MN	MTP(M) 12F IND
MP	MTP(M) 12F Pro

8	Fanout Length End 1
A	25cm
B	50cm
C	100cm
D	150cm
E	200cm
F	300cm
N	NA
9	Fanout Type End 1
2	2mm
3	3mm
9	900um
B	3.8mm
R	Flat/Oval (MTP)
N	NA
10	Fanout Geometry End 1
0	No Stagger
1	Stagger 1
2	Stagger 2
3	Stagger 3
4	Stagger 4
N	NA
11,12	Connector End 2
00	PIGTAIL
FA	FC/APC
FC	FC
LA	LC/APC SX
LC	LC SX
LD	LC DX
LM	LC-MINI DX
LU	LC UNIBOOT
LZ	LC/APC DX
RJ	MTRJ(F)
RM	MTRJ(M)
SA	SC/APC SX
SC	SC SX
SD	SC DX
ST	ST
SZ	SC/APC DX

13	Fanout Length End 2
A	25cm
B	50cm
C	100cm
D	150cm
E	200cm
F	300cm
N	NA
14	Fanout Type End 2
2	2mm
3	3mm
9	900um
N	NA
15	Fanout Geometry End 2
0	No Stagger
1	Stagger 1
2	Stagger 2
3	Stagger 3
4	Stagger 4
N	NA
16	Connector Performance
E	EFG GRADE
L	LOW LOSS
S	STANDARD
17	Assembly Polarity
F	Standard (default)
G	Reversed
D	40G
18	Length (Meters)
19	Pull Kits
0	No PK
1	PK End B
2	PK Both Ends

FANOUT CONNECTOR PERFORMANCE

Connector	Standard (S) Max IL (dB)		Low Loss (L) Max IL (dB)		Min Return Loss SM (db)
	OM1, OM2, OM3, OM4	OS2	OM1, OM2, OM3, OM4	OS2	
LC	0.4	0.4	0.2	0.2	-55
LC/UNI	0.4	0.4	0.2	0.2	-55
LC/ODVA	0.4	0.4	0.2	0.2	-55
SC	0.4	0.4	0.2	0.2	-55
ST	0.4	0.4	0.2	0.2	-55
FC	0.4	0.4	0.2	0.2	-55
LC/APC	0.4	0.4	0.2	0.2	-65
SC/APC	0.4	0.4	0.2	0.2	-65
FC/APC	0.4	0.4	0.2	0.2	-65
MTRJ	0.4	0.4	0.3	0.3	-40
MTP ≤ 12F	0.5	0.5	0.35*	0.35	-60
MTP 24F	0.5	1.15	0.35	0.75	-60
MTP/IND ≤ 12F	0.5	0.75	0.35	0.35	-60
MTP/IND 24F	0.75	1.15	0.35	0.75	-60
Optitip	-	-	-	-	-

*Low Loss OM4 MTP ≤ 12F Max IL = 0.2db or better

FIBER PERFORMANCE

Fiber Type	Multimode				Singlemode
	OM1 62.5/125µm (850/1300nm)	OM2 50/125µm (850/1300nm)	OM3 50/125µm (850/1300nm)	OM4 50/125µm (850/1300nm)	OS2 8/125µm (1310/1550nm)
Attenuation, Max (dB/km)	3.4/1.0	3.0/1.0	3.0/1.0	3.0/1.0	0.4/0.3
Minimum Overfilled Launch (OFL Bandwidth (Mhz.km)	200/500	700/500	1500/500	1500/500	N/A
Minimum Effective Modal Bandwidth (Mhz.km)	220/-	950/-	2000/-	5350/-	N/A
Serial 1 Gigabit Ethernet Distance (M)	300/550	750/600	1000/600	1000/600	5000/-
Serial 10 Gigabit Ethernet Distance (M)	33/-	150/-	300/-	600/-	10000/40000

Fiber Type	Multimode	Singlemode
Connector Insertion Loss	Standard MTPs: 0.2dB Typical, 0.5dB Maximum Elite MTPs: 0.17dB Typical, 0.35dB Maximum Super Low Loss Elite: 0.1dB Typ, 0.2dB Max (OM4 only)	Std MTPs: 0.25dB Maximum Elite MTPs: 0.17dB Typical, 0.35dB Maximum
Connector Return Loss	>20dB	>55dB