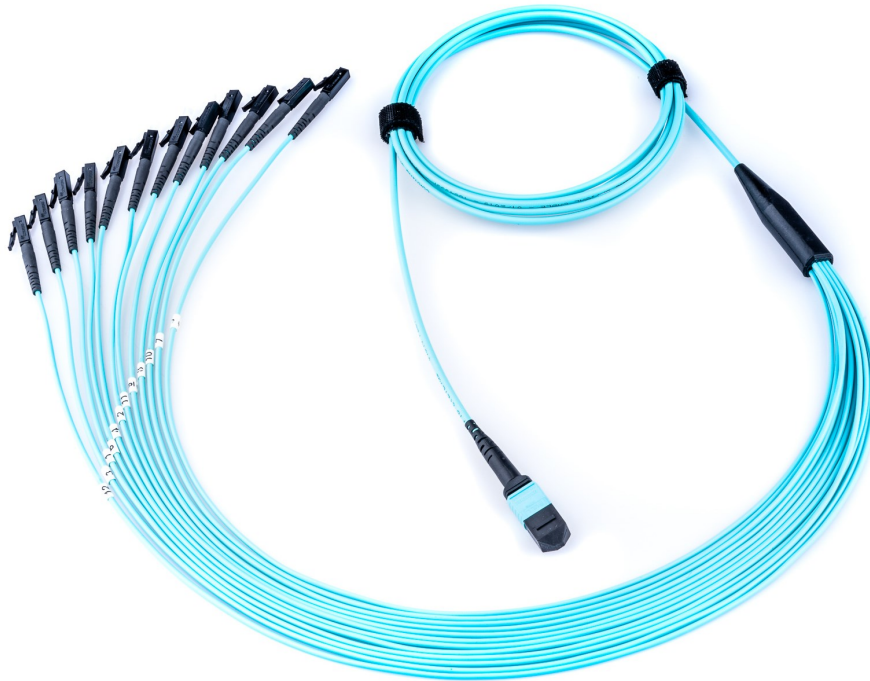




# MTP/MPO FANOUT ASSEMBLIES



## Customizable MTP Fanouts for any application.

Fiber Connections' fanout assemblies are custom made to each customer's individual requirements. Fanouts are available in a wide variety of cable, fiber and connector configurations. These assemblies are made to order and 100% tested. Each assembly is individually packaged and serialized with test results included. These high quality assemblies are made to order to your exact requirements.

### KEY FEATURES

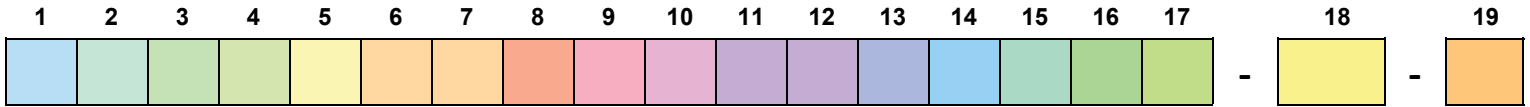
- factory terminated/tested solution eliminates installation variability
- 100% end face geometry testing is available upon request
- industry leading super low MTP insertion loss values
- custom configurations available upon request
- many fanout jacket sizes to choose from such as 900µm, 2mm, 3mm
- manufactured in North America for quick turn around

### TYPICAL INTERCONNECTIONS

- data center applications
- backbone installations
- horizontal zone cabling
- high density cross connects
- disaster recovery projects
- 40G, 100G, QSFP Applications



## ORDERING INFORMATION



<b>1</b>	<b>Assembly Type</b>
C	Cable Assembly (Corning)
D	Cable Assembly (Non-Corning)
<b>2</b>	<b>Fiber Type</b>
1	OM1
2	OS2
3	OM2
9	OM3
A	OM4
<b>3</b>	<b>Fiber Count</b>
6	6F
8	8F
A	12F
B	16F
C	18F
D	24F
E	32F
F	36F
H	48F
J	60F
K	72F
L	96F
M	144F
P	216F
V	288F
<b>4</b>	<b>Cable Rating</b>
A	Riser (In/Outdoor)
B	Plenum (In/Outdoor)
C	LSZH (In/Outdoor)
D	Riser Armored
E	Plenum Armored
F	LSZH Armored
G	No Jacket
H	Riser Armored (In/Outdoor)
J	LSZH Armored (In/Outdoor)
K	Not Rated (OSP) Armored
L	LSZH
N	Not Rated (OSP)
P	Plenum
R	Riser
S	Plenum Armored (In/Outdoor)

<b>5</b>	<b>Cable Type</b>
H	2mm Mini-Dist (Max 12F)
J	Dual jacket Mini-Dist w/3mm subs
P	SST
Q	Ribbon
S	Loose-tube Figure 8
U	Dual Jacket Mini-Dist w/2mm subs
V	3mm Mini-Dist Interconnect Max 24F
W	Loose-tube
<b>6,7</b>	<b>Connector End 1</b>
00	PIGTAIL
F8	MTP(F) Base 8 Pro
FB	MTP(F) 24F
FD	MTP(F) Base 8
FJ	MTP(F) 24F IND
FM	MTP(F) 12F
FN	MTP(F) 12F IND
FP	MTP(F) 12F Pro
M8	MTP(M) Base 8 Pro
MB	MTP(M) 24K
MD	MTP(M) Base 8
MJ	MTP(M) 24F IND
MM	MTP(M) 12F
MN	MTP(M) 12F IND
MP	MTP(M) 12F Pro

<b>8</b>	<b>Fanout Length End 1</b>
A	25cm
B	50cm
C	100cm
D	150cm
E	200cm
F	300cm
N	NA
<b>9</b>	<b>Fanout Type End 1</b>
2	2mm
3	3mm
B	3.8mm
R	Flat/Oval (MTP)
N	NA
<b>10</b>	<b>Fanout Geometry End 1</b>
0	No Stagger
1	Stagger 1
2	Stagger 2
3	Stagger 3
4	Stagger 4
N	NA
<b>11,12</b>	<b>Connector End 2</b>
00	PIGTAIL
FA	FC/APC
FC	FC
LA	LC/APC SX
LC	LC SX
LD	LC DX
LM	LC-MINI DX
LU	LC UNIBOOT
LZ	LC/APC DX
RJ	MTRJ(F)
RM	MTRJ(M)
SA	SC/APC SX
SC	SC SX
SD	SC DX
ST	ST
SZ	SC/APC DX

<b>13</b>	<b>Fanout Length End 2</b>
A	25cm
B	50cm
C	100cm
D	150cm
E	200cm
F	300cm
N	NA
<b>14</b>	<b>Fanout Type End 2</b>
2	2mm
3	3mm
9	900um
A	2.5mm
B	3.8mm
R	Flat/Oval (MTP)
N	NA
<b>15</b>	<b>Fanout Geometry End 2</b>
0	No Stagger
1	Stagger 1
2	Stagger 2
3	Stagger 3
4	Stagger 4
N	NA
<b>16</b>	<b>Connector Performance</b>
E	EFG Grade
F	EFG Grade w/Test Data
L	Low Loss
S	Standard
<b>17</b>	<b>Assembly Polarity</b>
F	Standard (default)
G	Reversed
D	40G
<b>18</b>	<b>Length (Meters)</b>
<b>19</b>	<b>Pull Kits</b>
0	No PK
1	PK End B
2	PK Both Ends

## FANOUT CONNECTOR PERFORMANCE

Multimode	6.25/125 μm and 50/125μm @ 850nm	
Connector	Insertion Loss (dB)	Durability
	Max	<0.2dB
FCpc	0.4	<0.2dB
LC	0.4	<0.2dB
LC Duplex	0.4	<0.2dB
MTRJ	0.4	<0.2dB
SCpc	0.4	<0.2dB
STpc polybody	0.4	<0.2dB
STpc metal	0.4	<0.2dB

Singlemode	@1310nm			
Connector	Insertion Loss (dB)	Reflectance (dB)		Durability
	Max	Typical	Max	
FCupc	0.4	≤ -59	≤ -55	<0.2dB
FCapc	0.4	≤ -68	≤ -65	<0.2dB
LC	0.4	≤ -58	≤ -55	<0.2dB
LC Duplex	0.4	≤ -58	≤ -55	<0.2dB
MTRJ	0.4	≤ -53	≤ -40	<0.2dB
SCupc Duplex	0.4	≤ -59	≤ -55	<0.2dB
SCupc	0.4	≤ -58	≤ -55	<0.2dB
SCapc	0.4	≤ -68	≤ -65	<0.2dB
STupc polybody	0.4	≤ -58	≤ -55	<0.2dB
STupc metal	0.4	≤ -58	≤ -55	<0.2dB

## FIBER PERFORMANCE

Fiber Type	Multimode				Singlemode
	OM1 62.5/125μm (850/1300nm)	OM2 50/125μm (850/1300nm)	OM3 50/125μm (850/1300nm)	OM4 50/125μm (850/1300nm)	OS2 8/125μm (1310/1550nm)
Attenuation, Max (dB/km)	3.4/1.0	3.0/1.0	3.0/1.0	3.0/1.0	0.4/0.3
Minimum Overfilled Launch (OFL Bandwidth (Mhz.km)	200/500	700/500	1500/500	1500/500	N/A
Minimum Effective Modal Bandwidth (Mhz.km)	220/-	950/-	2000/-	5350/-	N/A
Serial 1 Gigabit Ethernet Distance (M)	300/550	750/600	1000/600	1000/600	5000/-
Serial 10 Gigabit Ethernet Distance (M)	33/-	150/-	300/-	600/-	10000/40000

Fiber Type	Multimode	Singlemode
Connector Insertion Loss	Standard MTPs: 0.2dB Typical, 0.5dB Maximum Elite MTPs: 0.17dB Typical, 0.35dB Maximum Super Low Loss Elite: 0.1dB Typ, 0.2dB Max (OM4 only)	Std MTPs: 0.25dB Maximum Elite MTPs: 0.17dB Typical, 0.35dB Maximum
Connector Return Loss	>20dB	>55dB