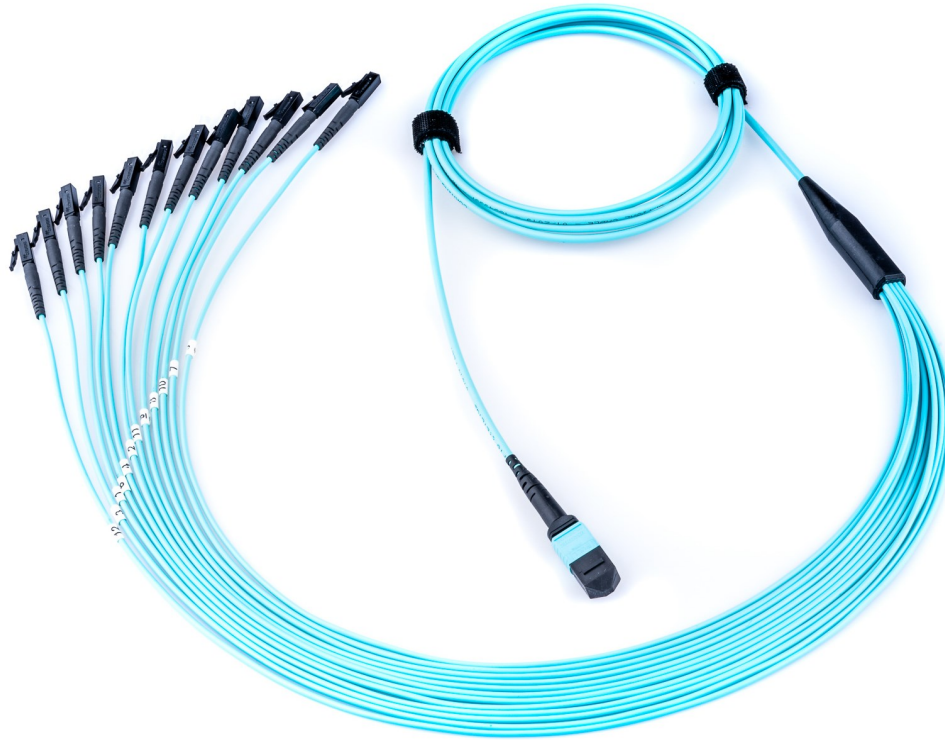




MTP/MPO FANOUT ASSEMBLIES



Customizable MTP Fanouts for any application.

Fiber Connections' fanout assemblies are custom made to each customer's individual requirements. Fanouts are available in a wide variety of cable, fiber and connector configurations. These assemblies are made to order and 100% tested. Each assembly is individually packaged and serialized with test results included. These high quality assemblies are made to order to your exact requirements.

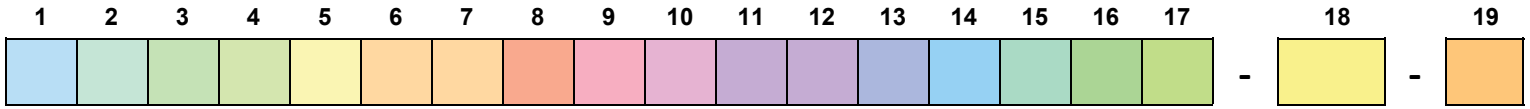
KEY FEATURES

- factory terminated/tested solution eliminates installation variability
- 100% end face geometry testing is available upon request
- industry leading super low MTP insertion loss values
- custom configurations available upon request
- many fanout jacket sizes to choose from such as 900µm, 2mm, 3mm
- manufactured in North America for quick turn around

TYPICAL INTERCONNECTIONS

- data center applications
- backbone installations
- horizontal zone cabling
- high density cross connects
- disaster recovery projects
- 40G, 100G, QSFP Applications

ORDERING INFORMATION



1	Assembly Type
C	Cable Assembly (Corning)
D	Cable Assembly (Non-Corning)
2	Fiber Type
1	OM1
2	OS2
3	OM2
9	OM3
A	OM4
3	Fiber Count
6	6F
8	8F
A	12F
B	16F
C	18F
D	24F
E	32F
F	36F
H	48F
J	60F
K	72F
L	96F
M	144F
P	216F
V	288F
4	Cable Rating
A	Riser (In/Outdoor)
B	Plenum (In/Outdoor)
C	LSZH (In/Outdoor)
D	Riser Armored
E	Plenum Armored
F	LSZH Armored
G	No Jacket
H	Riser Armored (In/Outdoor)
J	LSZH Armored (In/Outdoor)
K	Not Rated (OSP) Armored
L	LSZH
N	Not Rated (OSP)
P	Plenum
R	Riser
S	Plenum Armored (In/Outdoor)

5	Cable Type
H	2mm Mini-Dist (Max 12F)
J	Dual jacket Mini-Dist w/3mm subs
P	SST
Q	Ribbon
S	Loose-tube Figure 8
U	Dual Jacket Mini-Dist w/2mm subs
V	3mm Mini-Dist Interconnect Max 24F
W	Loose-tube
6,7	Connector End 1
00	PIGTAIL
F8	MTP(F) Base 8 Pro
FB	MTP(F) 24F
FD	MTP(F) Base 8
FJ	MTP(F) 24F IND
FM	MTP(F) 12F
FN	MTP(F) 12F IND
FP	MTP(F) 12F Pro
M8	MTP(M) Base 8 Pro
MB	MTP(M) 24K
MD	MTP(M) Base 8
MJ	MTP(M) 24F IND
MM	MTP(M) 12F
MN	MTP(M) 12F IND
MP	MTP(M) 12F Pro

8	Fanout Length End 1
A	25cm
B	50cm
C	100cm
D	150cm
E	200cm
F	300cm
N	NA
9	Fanout Type End 1
2	2mm
3	3mm
B	3.8mm
R	Flat/Oval (MTP)
N	NA
10	Fanout Geometry End 1
0	No Stagger
1	Stagger 1
2	Stagger 2
3	Stagger 3
4	Stagger 4
N	NA
11,12	Connector End 2
00	PIGTAIL
FA	FC/APC
FC	FC
LA	LC/APC SX
LC	LC SX
LD	LC DX
LM	LC-MINI DX
LU	LC UNIBOOT
LZ	LC/APC DX
RJ	MTRJ(F)
RM	MTRJ(M)
SA	SC/APC SX
SC	SC SX
SD	SC DX
ST	ST
SZ	SC/APC DX

13	Fanout Length End 2
A	25cm
B	50cm
C	100cm
D	150cm
E	200cm
F	300cm
N	NA
14	Fanout Type End 2
2	2mm
3	3mm
9	900um
A	2.5mm
B	3.8mm
R	Flat/Oval (MTP)
N	NA
15	Fanout Geometry End 2
0	No Stagger
1	Stagger 1
2	Stagger 2
3	Stagger 3
4	Stagger 4
N	NA
16	Connector Performance
E	EFG Grade
F	EFG Grade w/Test Data
L	Low Loss
S	Standard
17	Assembly Polarity
F	Standard (default)
G	Reversed
D	40G
18	Length (Meters)
19	Pull Kits
0	No PK
1	PK End B
2	PK Both Ends

FANOUT CONNECTOR PERFORMANCE

Multimode	6.25/125 μm and 50/125μm @ 850nm				
Connector	Insertion Loss (dB)		Durability	Ferrule Material	Housing Material
	Typical	Max	<0.2dB		
FCpc	0.2	0.4	<0.2dB	Ceramic	Metal Alloy
LC	0.2	0.4	<0.2dB	Ceramic	Composite
LC Duplex	0.2	0.4	<0.2dB	Ceramic	Composite
MTRJ	0.3	0.4	<0.2dB	Ceramic	Composite
SCpc	0.2	0.4	<0.2dB	Ceramic	Composite
STpc polybody	0.2	0.4	<0.2dB	Ceramic	Composite
STpc metal	0.2	0.4	<0.2dB	Ceramic	Metal Alloy

Singlemode	@1310nm						
Connector	Insertion Loss (dB)		Reflectance (dB)		Durability	Ferrule Material	Housing Material
	Typical	Max	Typical	Max			
FCupc	0.2	0.4	≤ -59	≤ -55	<0.2dB	Ceramic	Metal Alloy
FCapc	0.2	0.4	≤ -68	≤ -65	<0.2dB	Ceramic	Metal Alloy
LC	0.2	0.4	≤ -58	≤ -55	<0.2dB	Ceramic	Composite
LC Duplex	0.2	0.4	≤ -58	≤ -55	<0.2dB	Ceramic	Composite
MTRJ	0.3	0.4	≤ -53	≤ -40	<0.2dB	Composite	Composite
SCupc Duplex	0.2	0.4	≤ -59	≤ -55	<0.2dB	Ceramic	Composite
SCupc	0.2	0.4	≤ -58	≤ -55	<0.2dB	Ceramic	Composite
SCapc	0.2	0.4	≤ -68	≤ -65	<0.2dB	Ceramic	Composite
STupc polybody	0.2	0.4	≤ -58	≤ -55	<0.2dB	Ceramic	Composite
STupc metal	0.2	0.4	≤ -58	≤ -55	<0.2dB	Ceramic	Metal Alloy

FIBER PERFORMANCE

Fiber Type	Multimode				Singlemode
	OM1 62.5/125μm (850/1300nm)	OM2 50/125μm (850/1300nm)	OM3 50/125μm (850/1300nm)	OM4 50/125μm (850/1300nm)	OS2 8/125μm (1310/1550nm)
Attenuation, Max (dB/km)	3.4/1.0	3.0/1.0	3.0/1.0	3.0/1.0	0.4/0.3
Minimum Overfilled Launch (OFL Bandwidth (Mhz.km)	200/500	700/500	1500/500	1500/500	N/A
Minimum Effective Modal Bandwidth (Mhz.km)	220/-	950/-	2000/-	5350/-	N/A
Serial 1 Gigabit Ethernet Distance (M)	300/550	750/600	1000/600	1000/600	5000/-
Serial 10 Gigabit Ethernet Distance (M)	33/-	150/-	300/-	600/-	10000/40000

Fiber Type	Multimode	Singlemode
Connector Insertion Loss	Standard MTPs: 0.2dB Typical, 0.5dB Maximum Elite MTPs: 0.17dB Typical, 0.35dB Maximum Super Low Loss Elite: 0.1dB Typ, 0.2dB Max (OM4 only)	Std MTPs: 0.25dB Maximum Elite MTPs: 0.17dB Typical, 0.35dB Maximum
Connector Return Loss	>20dB	>55dB