

Multi Fiber Cable Assemblies



Pre-terminated cable
assemblies made your
way



**Fiber
Connections Inc.**
Innovate | Design | Deliver

Multi Fiber Cable Assemblies



Pre-terminated cable assemblies make installation a breeze

Fiber Connections can manufacture cable assemblies using almost any type of cable or connector available on the market today. All of our assemblies are manufactured here in North America using the highest quality components. All assemblies are 100% tested in our lab using state of the art equipment. If you don't find what you're looking for as part of our standard product offering, please contact customer service to discuss your needs.

KEY FEATURES

- 100% tested in our state of the art production facility
- 100% EFG testing is available upon request.
- wide variety of connector and cable options available
- custom configurations are available upon request
- manufactured in North America
- factory terminated/tested assemblies reduce installation variability installation time
- super low loss MTP insertion loss values
- quick turn around of standard and custom assemblies
- detailed drawings available upon request



ORDERING INFORMATION AND TECHNICAL SPECIFICATIONS

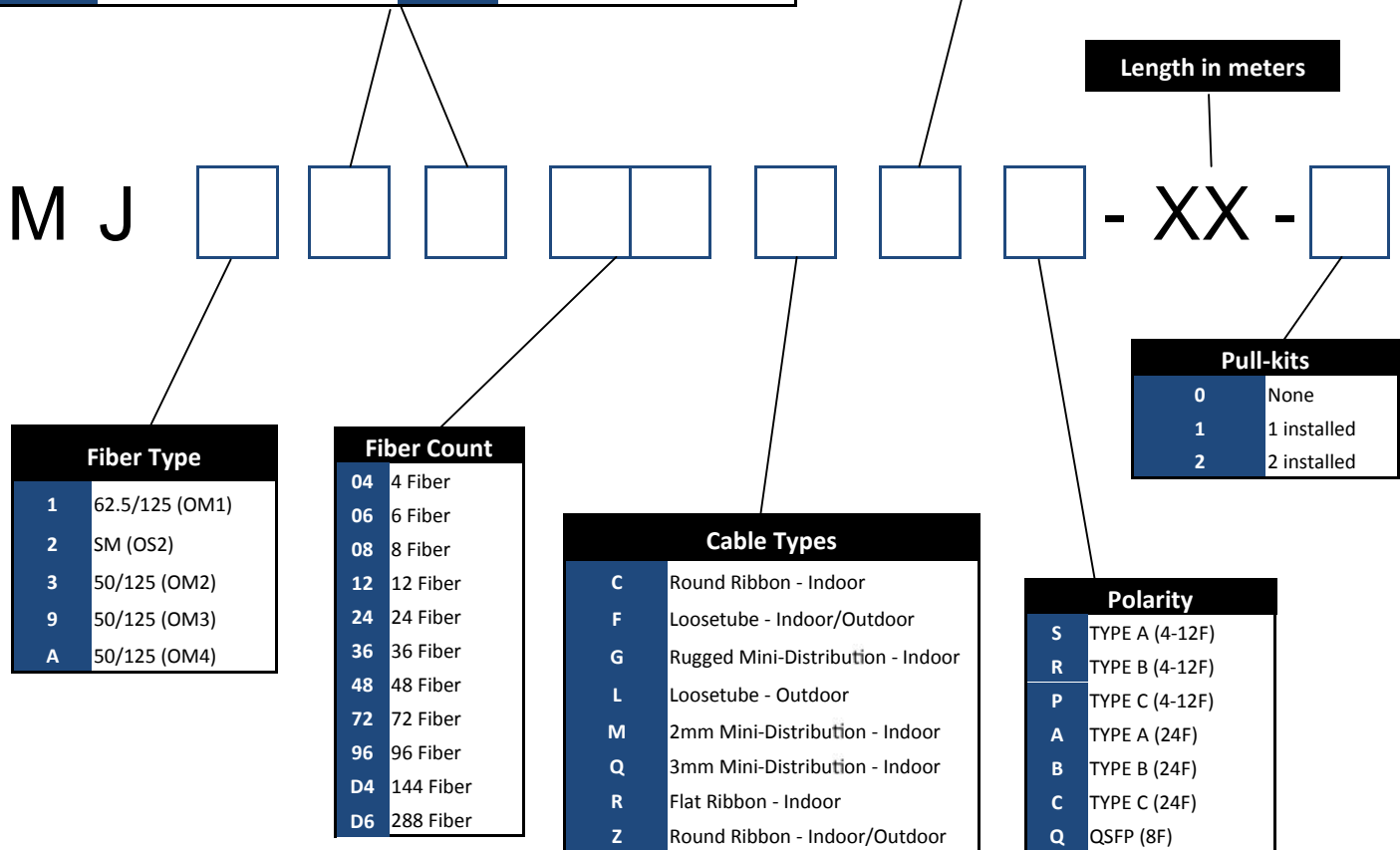
MTP-MTP Cable Assemblies

Fiber Connections is one of the industry leaders when it comes to MTP/MPO technology. Our R & D staff has developed proprietary termination and polishing techniques that have allowed us to exceed many of the industry standards for these products.



Connector Types			
G	MTP(f) ELITE 12F	W	MTP(f) 4F
H	MTP(m) ELITE 12F	X	MTP(m) 4F
J	MTP(f) 24F	Y	MTP(f) 8F
K	MTP(m) 24F	Z	MTP(m) 8F
M	MTP(f) 12F	1	MPO(f) INDUSTRIAL
N	MTP(m) 12F	2	MPO(m) INDUSTRIAL
U	MTP(f) 6F	3	MTP(f) SUPER ELITE (OM4 only)
V	MTP(m) 6F	4	MTP(m) SUPER ELITE (OM4 only)
O	Pigtail (blunt)		

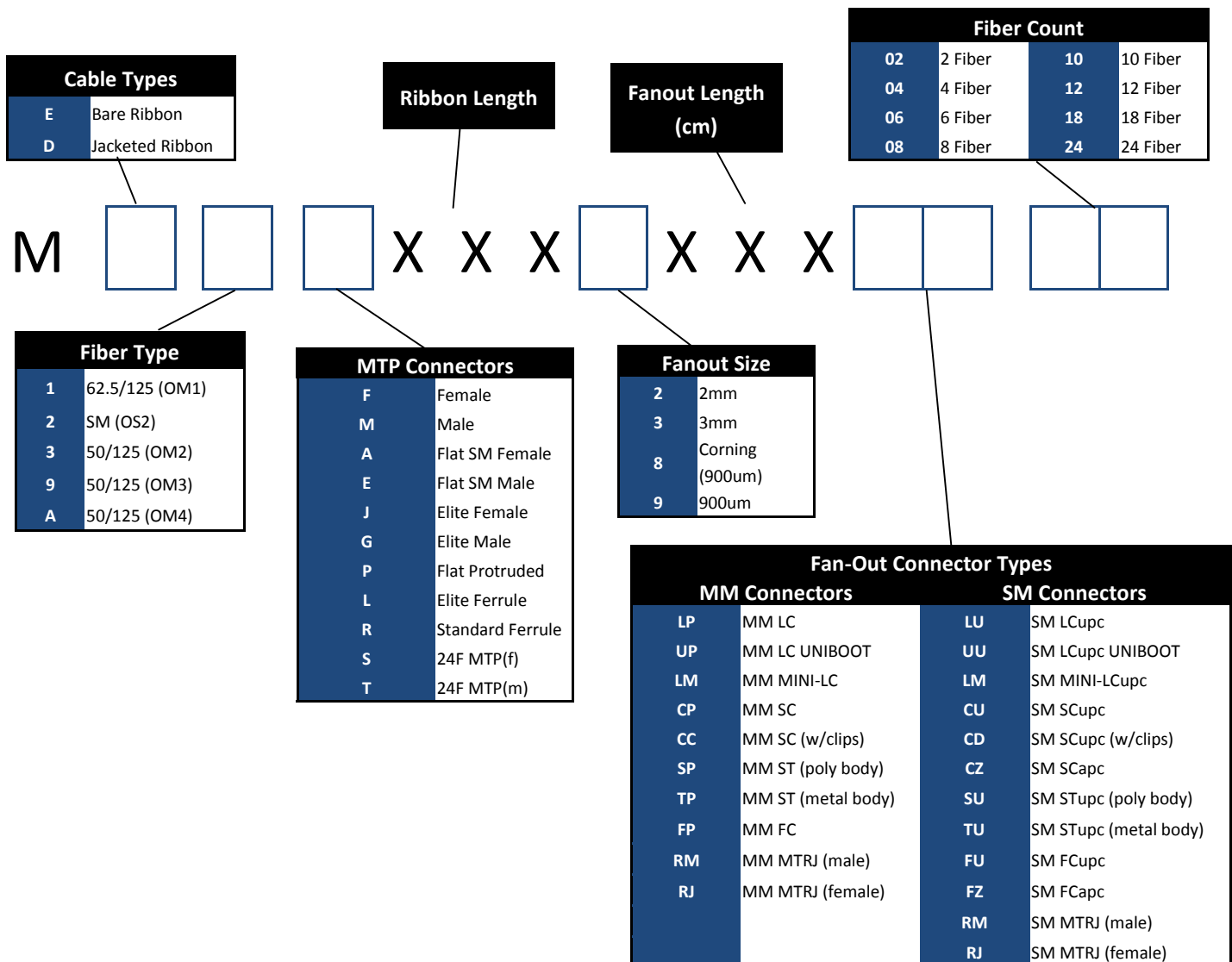
Cable Rating	
R	Riser (FT4)
P	Plenum (FT6)
A	Armored (not rated)
N	Non-Armored (not rated)
F	Customer Supplied
O	Bare Ribbon
L	LSZH
B	Armored Riser
C	Armored Plenum



ORDERING INFORMATION AND TECHNICAL SPECIFICATIONS

MTP Fanout Cable Assemblies

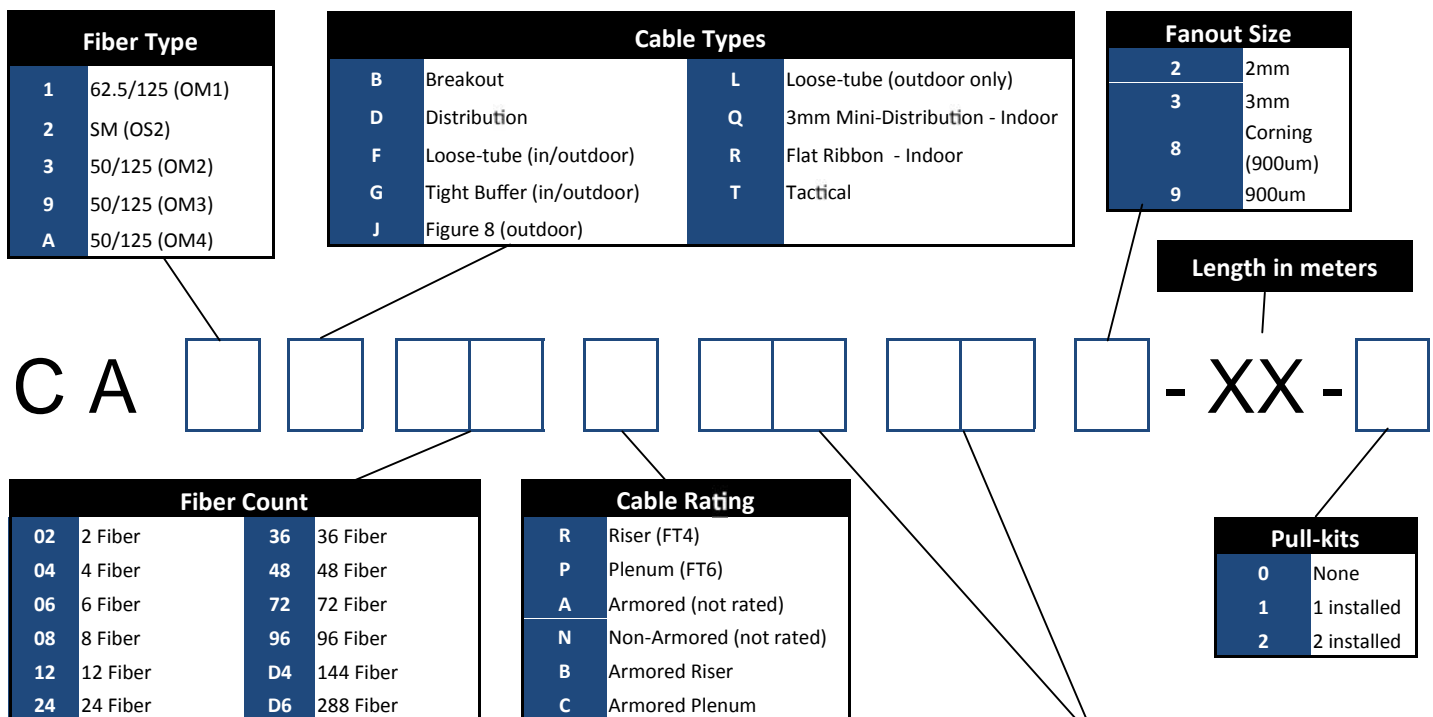
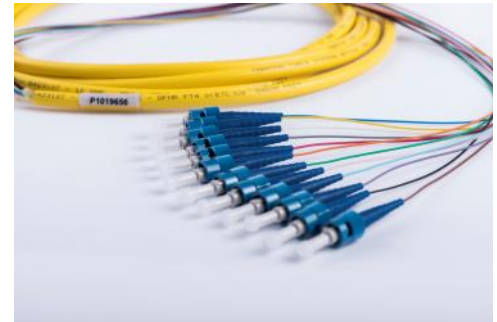
Fiber Connections can manufacture fanout assemblies in almost every possible configuration. Please contact customer service today to discuss your specific needs.



ORDERING INFORMATION AND TECHNICAL SPECIFICATIONS

Multi Fiber Assemblies with Single Fiber Connectors at both ends

Fiber Connections can manufacture fanout assemblies in almost every possible configuration. Please contact customer service today to discuss your specific needs.



Connector Types			
MM Connectors		SM Connectors	
LP	MM LC	LU	SM LCupc
UP	MM LC UNIBOOT	UU	SM LCupc UNIBOOT
LM	MM MINI-LC	LM	SM MINI-LCupc
CP	MM SC	CU	SM SCupc
CC	MM SC (w/clips)	CD	SM SCupc (w/clips)
SP	MM ST (poly body)	CZ	SM SCapc
TP	MM ST (metal body)	SU	SM STupc (poly body)
FP	MM FC	TU	SM STupc (metal body)
RM	MM MTRJ (male)	FU	SM FCupc
RJ	MM MTRJ (female)	FZ	SM FCapc
RN	MM MTRJ (male) A-A B-B (one end only)	RM	SM MTRJ (male)
RV	MM MTRJ (female) A-A B-B (one end only)	RJ	SM MTRJ (female)
00	PIGTAIL (one end only)	RN	SM MTRJ (male) A-A B-B (one end only)
		RV	SM MTRJ (female) A-A B-B (one end only)
		00	PIGTAIL (one end only)

TECHNICAL SPECIFICATIONS

Single Fiber & MTRJ Connector Performance

Multimode		62.5/125 μm and 50/125μm @ 850nm					
Connector	Insertion Loss (dB)		Reflectance (dB)		Durability	Ferrule Material	Housing Material
	Typical	Max					
FCpc	0.2	0.4			< 0.2dB	Ceramic	Metal Alloy
LC	0.2	0.4			< 0.2dB	Ceramic	Composite
LC Duplex	0.2	0.4			< 0.2dB	Ceramic	Composite
MTRJ	0.3	0.4			< 0.2dB	Ceramic	Composite
SCpc	0.2	0.4			< 0.2dB	Ceramic	Composite
STpc polybody	0.2	0.4			< 0.2dB	Ceramic	Composite
STpc metal	0.2	0.4			< 0.2dB	Ceramic	Metal Alloy
Single-mode		@ 1310nm					
Connector	Insertion Loss (dB)		Reflectance (dB)		Durability	Ferrule Material	Housing Material
	Typical	Max	Typical	Max			
FCupc	0.2	0.4	≤ -59	≤ -55	< 0.2dB	Ceramic	Metal Alloy
FCapc	0.2	0.4	≤ -68	≤ -65	< 0.2dB	Ceramic	Metal Alloy
LC	0.2	0.4	≤ -58	≤ -55	< 0.2dB	Ceramic	Composite
LC Duplex	0.2	0.4	≤ -58	≤ -55	< 0.2dB	Ceramic	Composite
MTRJ	0.3	0.4	≤ -53	≤ -40	< 0.2dB	Composite	Composite
SCupc Duplex	0.2	0.4	≤ -59	≤ -55	< 0.2dB	Ceramic	Composite
SCupc	0.2	0.4	≤ -58	≤ -55	< 0.2dB	Ceramic	Composite
SCapc	0.2	0.4	≤ -68	≤ -65	< 0.2dB	Ceramic	Composite
STupc polybody	0.2	0.4	≤ -58	≤ -55	< 0.2dB	Ceramic	Composite
STupc metal	0.2	0.4	≤ -58	≤ -55	< 0.2dB	Ceramic	Metal Alloy
<i>Durability - insertion loss change for 500 reconnections.</i>							

MTP Connector Performance

Fiber Type	Multimode	Singlemode
Connector Insertion Loss	Standard MTPs: 0.2dB Typical, 0.5dB Maximum Elite MTPs: 0.17dB Typical, 0.35dB Maximum Super Low Loss Elite: 0.1dB Typ, 0.2dB Max (OM4 only)	Std MTPs: 0.25 dB Typical, 0.5dB Maximum Elite MTPs: 0.17dB Typical, 0.35dB Maximum
Connector Return Loss	>20dB	>55dB

SCHEMATICS

Fiber Transmission Performance

	Multimode				Single-mode
Fiber Type	62.5/125 μ m (850/1300nm)	50/125 μ m (850/1300nm)	50/125 μ m (850/1300nm)	50/125 μ m (850/1300nm)	Single-mode (1310/1383/1550nm)
ISO/IEC name	OM1	OM2	OM3	OM4	OS2
Maximum Attenuation (dB/km)	3.4/1.0	3.0/1.0	3.0/1.0	3.0/1.0	0.4/0.4/0.3*
Maximum Attenuation (dB/km)	3.4/1.0	3.0/1.0	3.0/1.0	3.0/1.0	0.65/0.65/0.5**
Minimum Over Filled Launch (OFL) Bandwidth (MHx•km)	200/500	700/500	1500/500	1500/500	- / - / -
Minimum Effective Modal Bandwidth (MHx•km)	220 / -	950 / -	2000 / -	5350† / -	- / - / -
Serial 1 Gigabit Ethernet Distance (m)	300/550	750/600	1000/600	1000/600	5000/ - / -
Serial 10 Gigabit Ethernet Distance (m)	33/ -	150/ -	300/ -	600/ -	10000/ - / 40000

